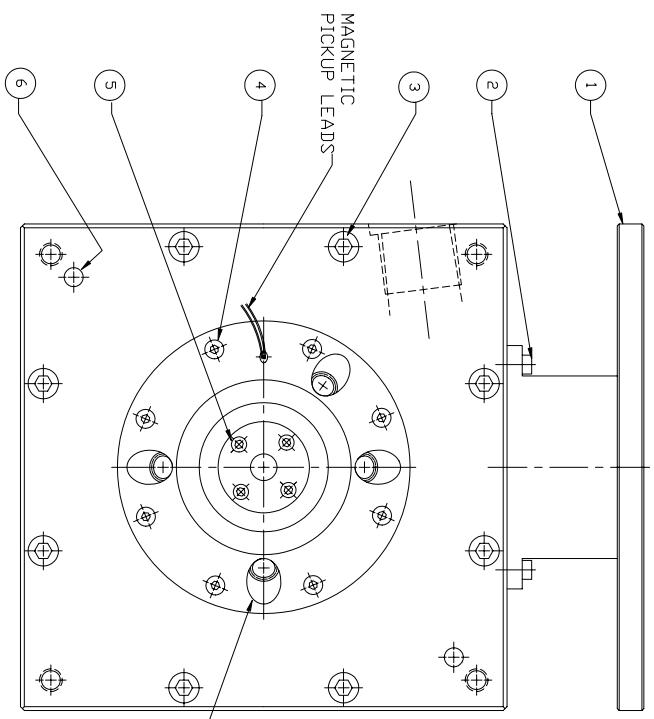
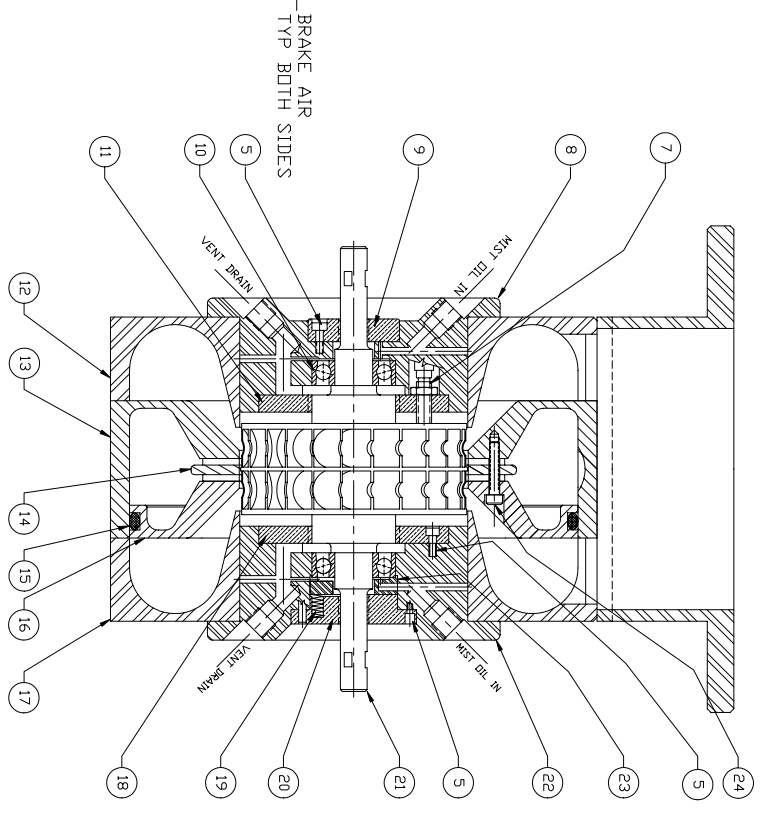


THIS DRAWING IS THE PROPERTY OF BARBER STOKWELL COMPANY, AND COMPANY. IT IS TO BE KEPT IN CONFIDENTIALITY AND NOT TO BE REPRODUCED OR TRANSMITTED IN ANY FORM OR BY ANY MEANS, ELECTRONIC OR MECHANICAL, INCLUDING PHOTOCOPYING, RECORDING, OR BY ANY INFORMATION STORAGE AND RETRIEVAL SYSTEM, WITHOUT THE WRITTEN PERMISSION OF BARBER STOKWELL COMPANY. THE COMPANY SHALL BE HELD HARMLESS FROM AND AGAINST ALL SUCH REPRODUCTION OR TRANSMISSION WITHOUT THE WRITTEN PERMISSION OF THE COMPANY. WHEN IN DISCREPANCY WITH THE COMPANY DRAWING, THE COMPANY DRAWING SHALL PREVAIL.



1. FOR PARTLIST PURPOSES, PORTIONS OF THIS SECTIONAL ASSEMBLY ARE SHOWN OUT OF TRUE POSITION.
2. WHEN ORDERING TURBINE PARTS, SERIAL NUMBER STAMPED ON B.S.C.O. NAMEPLATE SHOULD BE INCLUDED.
3. EXTREME CARE MUST BE USED IN THE HANDLING, POSITIONING & ALIGNING OF THE MATING PARTS.
4. REFER TO DRAWING 6050 FOR TURBINE INSTALLATION.
5. SHIPPING WEIGHT OF TURBINE IS APPROX. 62lb.
6. COMPONENTS OF THE NOZZLE BOX ASSEMBLY ARE NOT INDIVIDUALLY REPLACEABLE - ITEMS #12, #13, #14, #16, & #17.
7. THE SUFFIX XX IN COMPONENT PART NUMBERS INDICATE THE DESIGN INLET PRESSURE FOR THE TURBINE.



REF. NO.	PART NO.	QTY.	DESCRIPTION
1	6077	1	EXHAUST ADAPTER
2	1017	8	SCREW
3	6085	7	SCREW
4	4267	16	SCREW
5	6087	24	SCREW
6	6086	2	DDWEL PINS
7	1116	1	MAGNETIC PICKUP
8	6067	1	BEARING HOUSING (PICKUP SIDE)
9	6071	1	SEAL, OUTSIDE (PICKUP SIDE)
10	6030	2	BEARINGS
11	6072	1	SEAL, INSIDE (PICKUP SIDE)
12	6098	1	EXHAUST ANNULUS
13	6092Axx	1	NOZZLE BOX BASE
14	6091Axx	1	NOZZLE PLATE
15	6095	1	ORING, NOZZLE CHAMBER SEAL
16	6094Axx	1	CAP, NOZZLE BOX
17	6097	1	EXHAUST ANNULUS
18	6073	1	SEAL, INSIDE (PRELOAD SIDE)
19	6026	12	SPRING, PRELOAD
20	6074	1	SEAL, OUTSIDE (PRELOAD SIDE)
21	6066	1	ROTOR, 4" UNIVERSAL
22	6068	1	BEARING HOUSING (PRELOAD SIDE)
23	6076	1	PRESSURE RING
24	6096	17	SCREW

CHARACTERISTIC SYMBOLS	REFERENCE SYMBOLS	TO FINISH	UNLESS OTHERWISE SPECIFIED	REV.	DESCRIPTION	DATE	BY
STRAIGHTNESS	—	PERPENDICULARITY	⊥	1	BARBER STOCKWELL CO		
FLATNESS	∇	PARALLELISM	∥	2	300 THIRD STREET		
CIRCULARITY	○	POSITION	⊙	3	CAMDEN, MASS 02142		
CONCENTRICITY	⊕	CONCENTRICITY	⊕				
SYMMETRY	≡	SYMMETRY	≡				
CIRCULAR RUNOUT	⊘	CIRCULAR RUNOUT	⊘				
ANGULARITY	∠	ANGULARITY	∠				
		TOTAL ROUNDT	⊘				

UNLESS OTHERWISE SPECIFIED	DATE	APPROVED	DATE
FINISH SYMBOLS AS NOTED	DATE	APPROVED	DATE
HEAT TREAT	DATE	APPROVED	DATE
NONE	DATE	APPROVED	DATE

UNIVERSAL TURBINE	4" STANDARD - 60,000 RPM
DRAWING NUMBER	6050A
SCALE	FULL
SHEET	1 OF 1